



Introducing SOLKLAMP Ground Bolt

These bolts are designed for solar module grounding applications using solid copper uninsulated 6 AWG to 12 AWG wire. The grounding assembly consists of a wire bolt (wire slot on one end and threaded post on the other), wire binding hex nut, and mounting hex washer nut. The grounding assembly is used with metal-framed photovoltaic (solar) panels and related products that require grounding for safety reasons.

SOLKLAMP Ground Bolt



KEY FEATURES

- Rugged and compact hex bolt design made from stainless steel.
- Quick and easy mounting procedures.
- Bottom edge feature cuts through the anodized aluminum surface when securing the hex bolt to the module frame.
- Standard tooling can be used with the hex nuts.

Tyco Electronics Technical Support Center

USA:	+1 (800) 522-6752
Canada:	+1 (905) 470-4425
Central America & Mexico	+52 (0) 55-1106-0814
South America:	+55 (0) 11-2103-6000
Germany:	+49 (0) 6251-133-1999
UK:	+44 (0) 800-267666
France:	+33 (0) 1-3420-8686
Netherlands:	+31 (0) 73-6246-999
China:	+86 (0) 400-820-6015

Tyco Electronics Corporation
Harrisburg, PA

www.tycoelectronics.com

© 2010 Tyco Electronics Corporation. All Rights Reserved.
8-1773454-6 CIS 3M FP 04/2010
SOLKLAMP, TE (logo) and Tyco Electronics are trademarks of the Tyco Electronics group of companies and its licensors. Other products, logos, and Company names mentioned herein may be trademarks of their respective owners.

APPLICATIONS

Solar panels and related photovoltaic products require grounding per the National Electric Code (NEC Article 690.34). These applications include, but are not limited to electrical grounding of solar modules and solar roof tiles.

ELECTRICAL

Short Term Current Test (UL 467) :

6 AWG = 1530A (6 seconds), 8 AWG = 1180A (4 seconds)
10 AWG = 750A (4 seconds), 12 AWG = 470A (4 seconds)

MECHANICAL

Secureness Test (UL 486A-B) :

6 AWG = 18 lbs (30 minutes), 8 AWG = 8 lbs (30 minutes)
10 AWG = 5lbs (30 minutes), 12 AWG = 5 lbs (30 minutes)

Pull out Test (UL 486A-B) :

6 AWG = 100 lbs (1 minute), 8 AWG = 90 lbs (1 minute)
10AWG = 80 lbs (1 minute), 12 AWG = 70 lbs (1 minute)

MATERIALS

Connector and Hardware : Stainless Steel (Passivated)

PRODUCT OFFERING

PART NUMBER	THREAD	DIM "A"
2058729-1	#8-32 UNC	.380
2106831-1	#10-32 UNF	.700

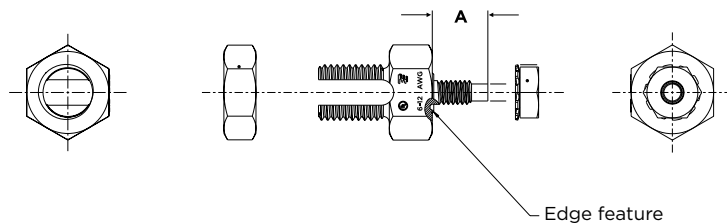
APPLICATION TOOLING

Hex socket wrench or wrenches

Top View

Side View

Bottom View



 **Tyco Electronics**
Our commitment. Your advantage.

While Tyco Electronics has made every reasonable effort to ensure the accuracy of the information in this catalog, Tyco Electronics does not guarantee that it is error-free, nor does Tyco Electronics make any other representation, warranty or guarantee that the information is accurate, correct, reliable or current. Tyco Electronics reserves the right to make any adjustments to the information contained herein at any time without notice. Tyco Electronics expressly disclaims all implied warranties regarding the information contained herein, including, but not limited to, any implied warranties of merchantability or fitness for a particular purpose. The dimensions in this catalog are for reference purposes only and are subject to change without notice. Specifications are subject to change without notice. Consult Tyco Electronics for the latest dimensions and design specifications.